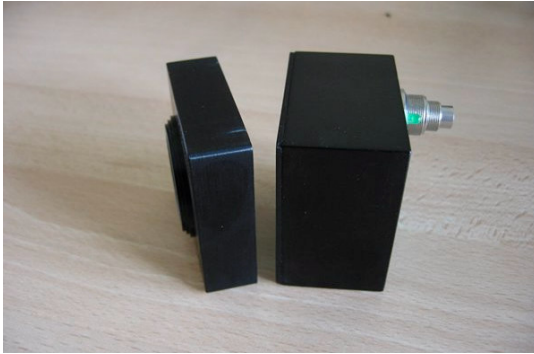
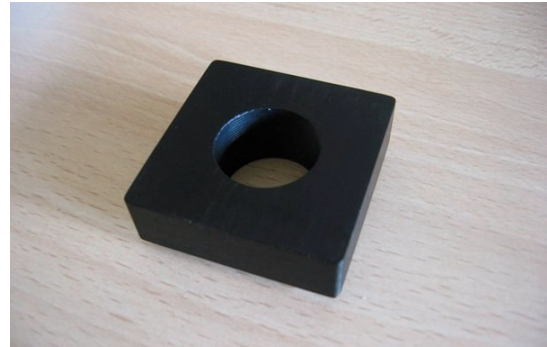


BC camera Scheimpflug housing



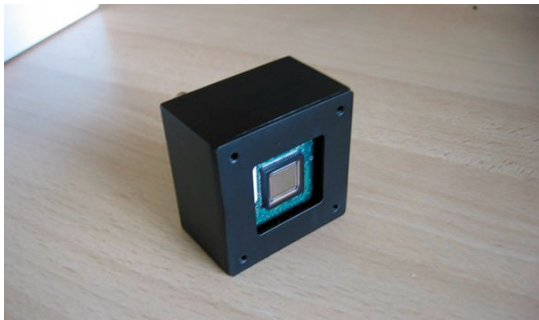
2-part Scheimpflug housing

The front-plate (left) can be machined at an angle before attaching to the camera body (right)



Back side of the front-plate

The front-plate is thick enough to allow quite a large Scheimpflug angle



Front of the camera housing

The sensor is almost level with the front of the housing



Rear of the camera housing

Shown without aluminium back-plate.

USB interface is shown. Trigger connector not fitted.



Adapter plate

On the bottom of the camera housing

Central: Standard 1/4" screw (photographic equipment)

Left & right: M6 industrial screw



C-Mount ferrule

Alternative to the front plate

Outside thread M30

Inside thread M25.4 (1") standard C-mount